

# SPEC SHEET + MEASUREMENTS



## OGIO® Women's Trax Jacket. LOG726

### Product photo



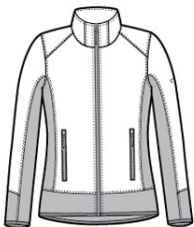
This water-resistant, forward-thinking jacket fuses a technical grid pattern with stretch side panels for style that moves at your speed.

- 100% woven poly shell bonded to 100% poly knit fleece with 93/7 poly/spandex fleece side panels
- OGIO heat transfer label for tag-free comfort
- Reverse coil zippers
- Right chest pocket
- Zippered front pockets with OGIO zipper pulls
- Black reflective O on left sleeve
- Open cuffs and open drop tail hem with binding

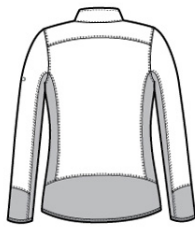
### CARE INSTRUCTIONS

Machine wash cold with like colors. Do not bleach. Tumble dry low. Remove Promptly. Cool iron if needed.

### Sketches



front



back

# SPEC SHEET + MEASUREMENTS



OGIO® Women's Trax Jacket. LOG726

## PRODUCT MEASUREMENTS

	XS	S	M	L	XL	2XL	3XL	4XL
Size	2	4/6	8/10	12/14	16/18	20/22	24/26	28/30
Body Length at Front	26 1/2	27	27 1/2	28	28 1/2	29	29 1/2	30
Bust	17 1/2	18 1/2	19 1/2	21	22 1/2	24	26	28
Sleeve Length	32	32 1/2	33	33 5/8	34 1/4	34 7/8	35 1/4	35 5/8

**Body Length at Front:** Measure from high point shoulder to lowest point of hem at front.

**Bust:** Measured across the chest one inch below armhole when laid flat.

**Sleeve Length:** Start at center of neck and measure down shoulder, down sleeve to hem.

## SIZE CHARTS

	XS	S	M	L	XL	2XL	3XL	4XL
Size	2	4/6	8/10	12/14	16/18	20/22	24/26	28/30
Bust	32-34	35-36	37-38	39-41	42-44	45-47	48-51	52-55

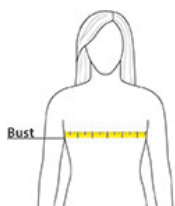
# SPEC SHEET + MEASUREMENTS



OGIO® Women's Trax Jacket. LOG726

## HOW TO MEASURE

---



### **BUST**

Measure under the arm and around the fullest part of the bust with arms down, keeping tape horizontal.

## COLORS

---



Blacktop  
PMS BLACK  
C